



Touch-Base Parent-Teacher-Meet

Primary 6

5 Jan 2024

**CANTONMENT
PRIMARY SCHOOL**



Our School Vision

Concerned Citizens, Innovative Thinkers, Passionate Learners

Our Mission

To nurture and empower our students to realize their potential and aspirations so as to have a positive and significant impact in society

Our Core Values

Care, Graciousness, Integrity, Respect, Resilience

Agenda

1. Holistic Development
2. Primary 6 Level
3. Assessment Matters
4. School Expectations
5. Home School Collaboration
6. Class Information

HOLISTIC DEVELOPMENT

Signature Programmes | Learning Dispositions | Leader In Me

Signature Programmes

APPLIED LEARNING PROGRAMME (ALP)	LIFELONG LEARNING PROGRAMME (LLP)	CHARACTER & CITIZENSHIP EDUCATION (CCE)
Thinking Curriculum	Performing Arts for Values and Excellence PAVE	Interdisciplinary Project Work (IPW)

Learning Dispositions

JOY OF LEARNING






OPEN-MINDEDNESS

EMPATHY

- Students possess the curiosity to learn.
- They derive satisfaction from learning new skills or discovering new ideas.
- They are resilient and do not give up easily when the problem is challenging.
- Students who are inventive are flexible in their thinking and can-do things in different ways.
- They possess a growth mind-set and reframe challenges.
- Students recognise that everyone is different.
- They are able to understand and share another person's perspective, experience and emotion.
- They embrace differences, listen and respond to others with care and respect.

School Values Chart

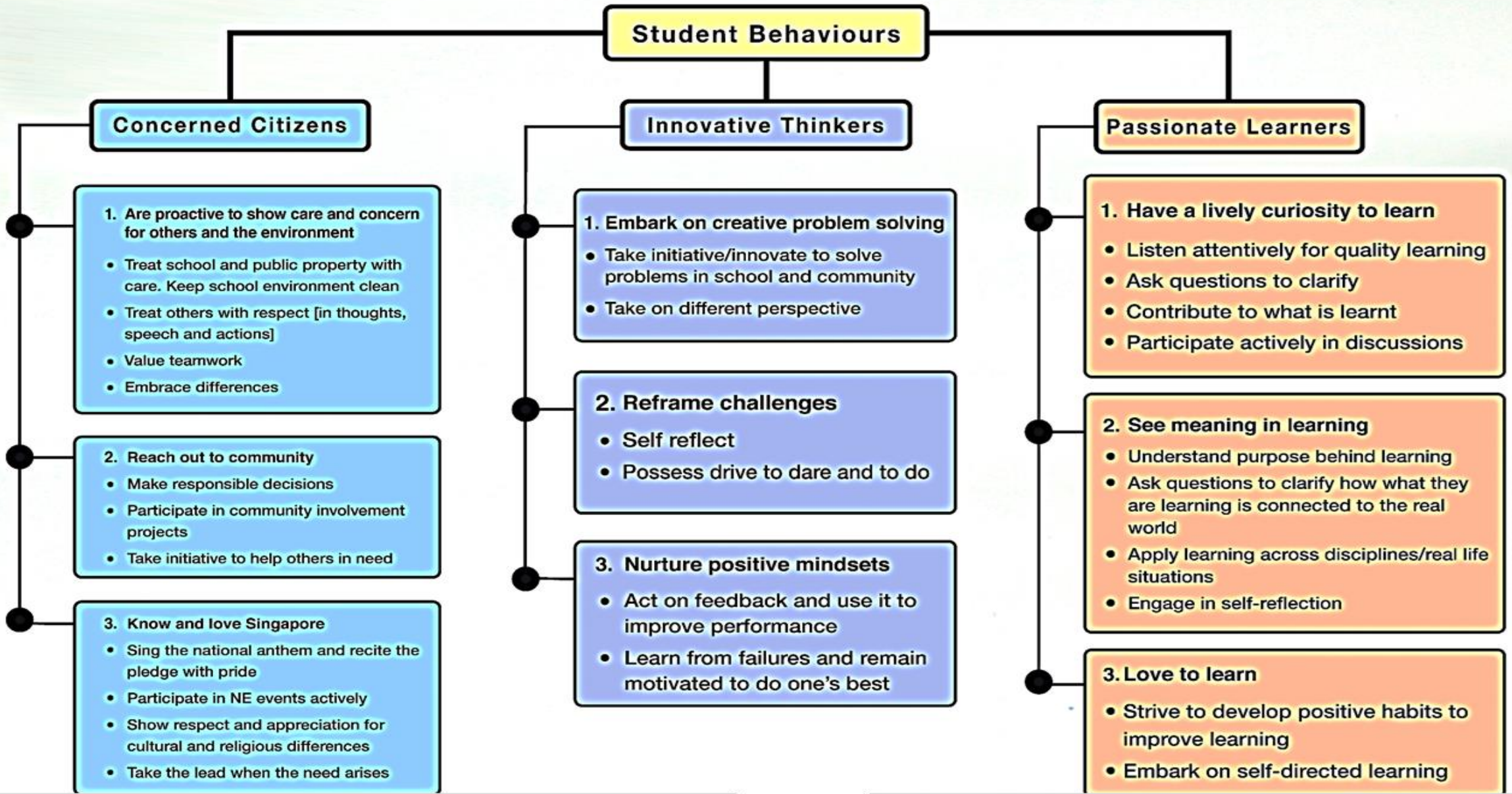
**This can also be found in your child's school handbook.*

SCHOOL VALUES CHART				
Desired Behavioural Indicators				
 <p>RESPECT</p>	 <p>GRACIOUSNESS</p>	 <p>INTEGRITY</p>	 <p>CARE</p>	 <p>RESILIENCE</p>
<ol style="list-style-type: none">1. Be polite to everyone.2. Be in good behaviour at all times.3. Be appreciative of others.4. Listen when others are speaking.	<ol style="list-style-type: none">1. Practise good manners at all times.2. Consider the feelings of others before self.3. Speak well of others.4. Treat others the way I want to be treated.	<ol style="list-style-type: none">1. Be honest.2. Distinguish right from wrong.3. Do the right thing even when no one is watching.4. Make responsible decisions.	<ol style="list-style-type: none">1. Be kind to self and to others.2. Care for and share with others readily.3. Be generous and help others in need.4. Look after self, the school's property and the environment.	<ol style="list-style-type: none">1. Learn from failure and remain motivated to achieve my best.2. Manage my emotions calmly.3. Explore alternative solutions when faced with challenging situations.4. Be committed when I have a goal.



Cantonment Primary School

Actualising Our Vision



VISION & VALUES	LEARNING DISPOSITIONS
<p>PASSIONATE LEARNERS</p> <p><u>Values</u> Resilience Integrity</p>	<p>JOY OF LEARNING</p> <p><u>Description</u></p> <ul style="list-style-type: none"> • Students possess the curiosity to learn. • They derive satisfaction from learning new skills or discovering new ideas. • They are resilient and do not give up easily when the problem is challenging.
<p>INNOVATIVE THINKERS</p> <p><u>Values</u> Respect Resilience Integrity</p>	<p>OPEN-MINDEDNESS</p> <p><u>Description</u></p> <ul style="list-style-type: none"> • Students who are inventive are flexible in their thinking and can-do things in different ways. • They possess a growth mind-set and reframe challenges.
<p>CONCERNED CITIZENS</p> <p><u>Values</u> Respect Graciousness Care</p>	<p>EMPATHY</p> <p><u>Description</u></p> <ul style="list-style-type: none"> • Students recognise that everyone is different and has unique qualities. • They embrace differences and show respect for others.

Our

LeaderinMe®

Journey

The “Leader in Me” programme, espoused from the “7 Habits of Effective People”, aims at introducing good habits to our students to help them be leaders of self and of others.

Starting 2021, it is introduced to CPS students of all levels and conducted weekly in our lower primary classrooms and through termly activities for the other levels.

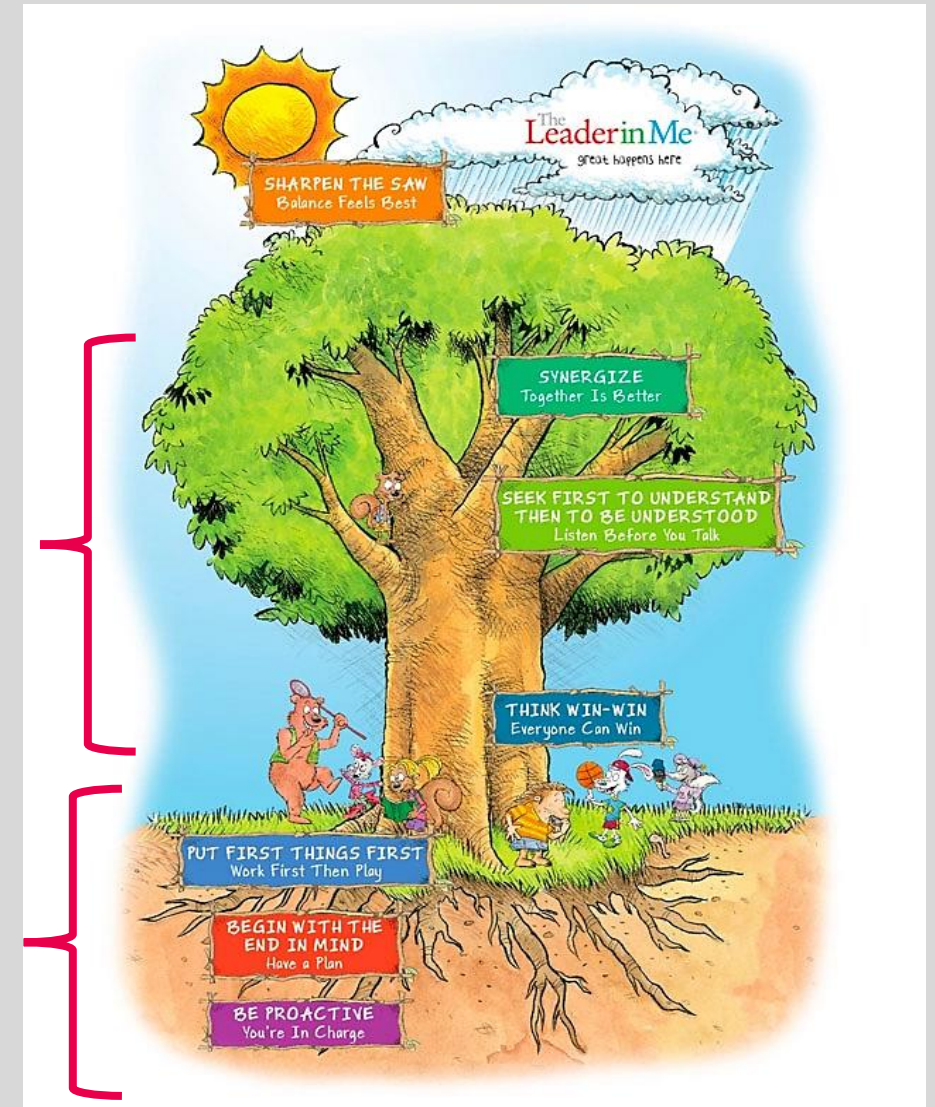
Students are engaged in activities and discussions and spend time reflecting on different ways they can exhibit the habit.

Teachers go through trainings and workshops, conducted by Franklin Covey, so that they can effectively facilitate the learning and discussion of these habits.

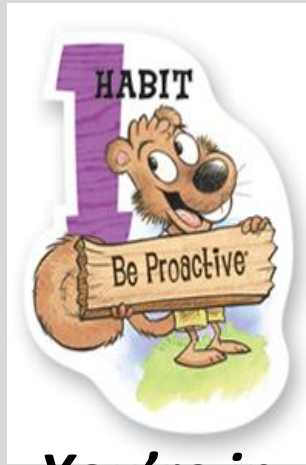
Habit 7:
More ways to lead

Habits 4 – 6:
Leading Others

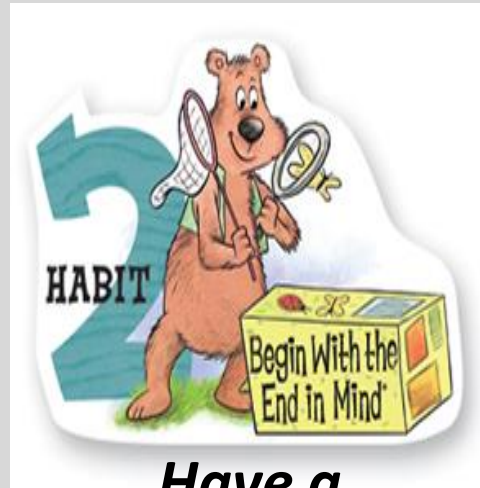
Habits 1 to 3:
Leading Self



7 Habits of LeaderinMe®



You're in Charge.



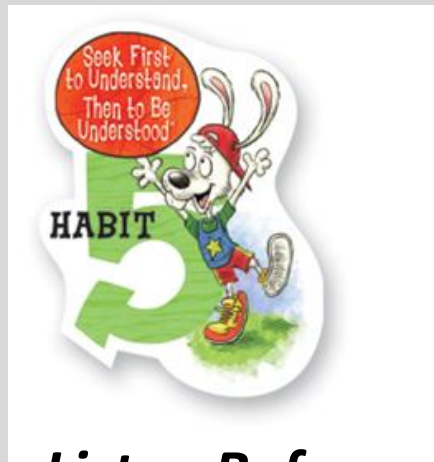
Have a Plan.



Work First, Then Play.



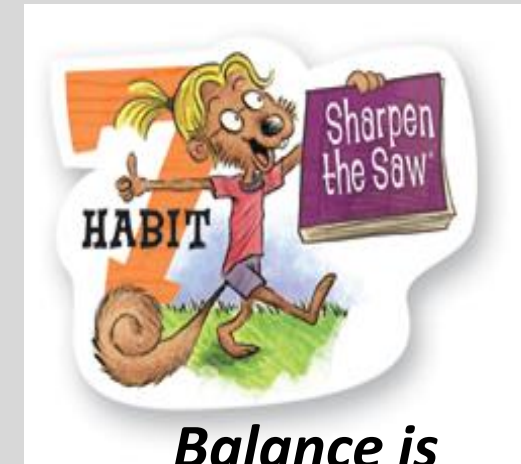
Everyone Can Win.



Listen Before You Talk.



***Together is Stronger.
We not I.***



Balance is Best.

PRIMARY 6 LEVEL

Programmes | ECG |
Edusave Awards & Scholarships

Some P6 programmes

- Motivational and Study Skills Workshop
- PCTC
- Post-PSLE Programme

For the various programmes, school will be issuing letters to parents via PG with more details & information

Educational Career Guidance (ECG)

- Education and Career Guidance (ECG) is about equipping students with the necessary knowledge, skills and values to make informed decisions at each key education stage for successful transition from school to further education or work, and hence to manage their career pathways and lifelong learning throughout their lives.
- Through ECG, social emotional competencies and qualities of proactivity, adaptability and resilience are developed to prepare students for the 21st Century.

Edusave Awards & Scholarships

Type of Award	Eligibility Criteria	Award Quantum
Edusave Character Award (ECHA)	Up to 2% of Singaporean Citizen students in each school who demonstrated exemplary character and outstanding personal qualities through their behaviour and actions.	Primary 1 to 3: \$200 Primary 4 to 6: \$350
Edusave Awards for Achievement, Good Leadership and Service (EAGLES)	Up to 10% of Singaporean Citizen students from each school who have demonstrated leadership qualities, service to community and schools, excellence in non-academic activities, and good conduct.	Primary 4 to 6: \$250
Edusave Scholarships	Singaporean Citizen students who are within the top 10% of their school's level and course in terms of academic performance and have demonstrated good conduct.	Primary 5 to 6: \$350

ASSESSMENT MATTERS

Assessment Matters

Term	Type of Assessment	Weightage
Term 1	Topical Reviews	-
Term 2	Timed Practice	-
Term 3	Preliminary Examinations <i>(used to benchmark for Edusave awards such as EAGLES and ECHA)</i>	100%
Term 4	PSLE	-

Marks will be reflected in the report book (Term 3).

About PSLE

- The Primary School Leaving Examination (PSLE) is an annual placement exercise for students at the end of their final year of primary school education in Singapore.
- Candidates will be placed in the appropriate secondary school courses based on their PSLE Scores.
- The PSLE Score is derived from the sum of the subject scores, ranging from 4 to 32.

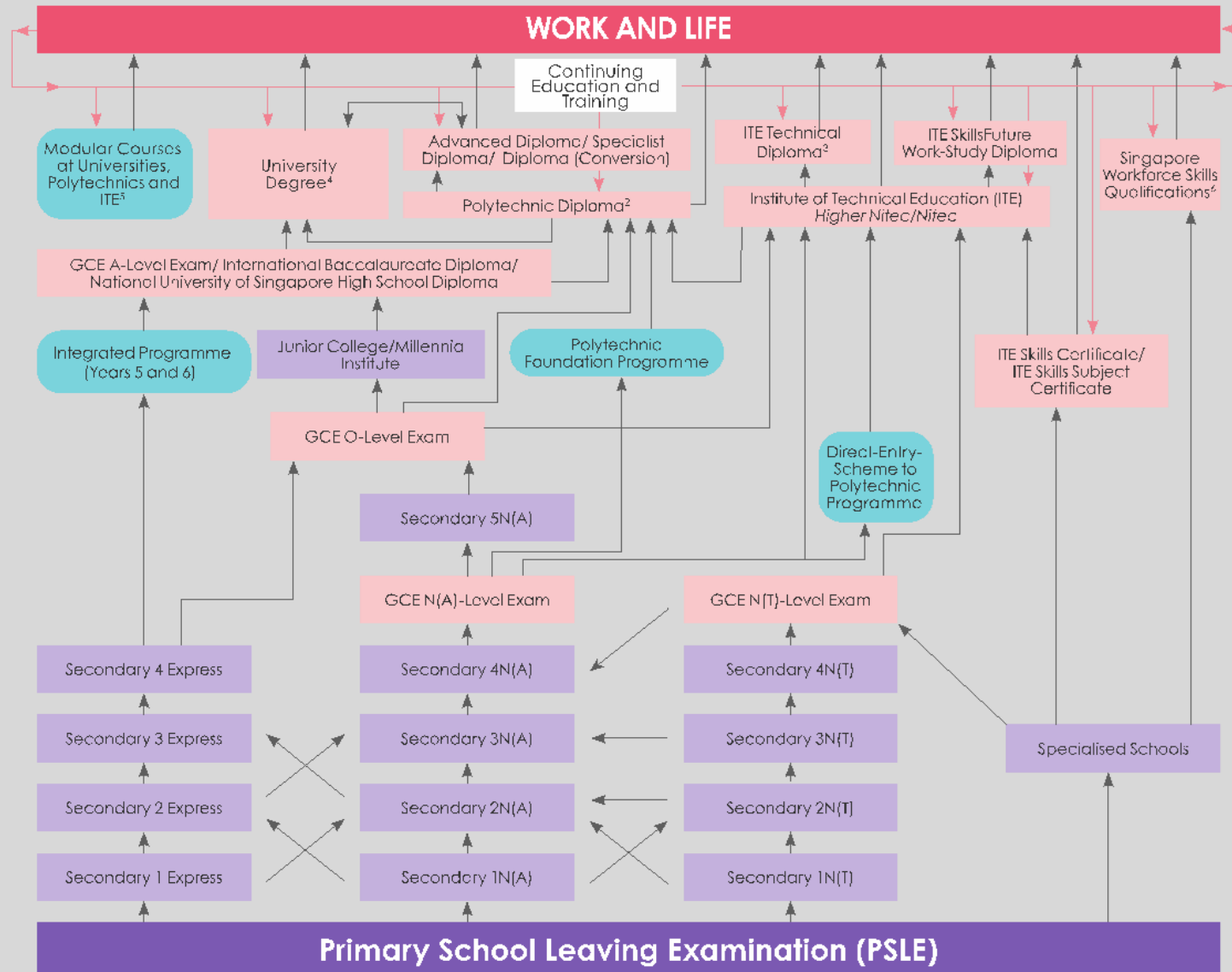
Preparing for PSLE

WHAT	HOW
<p data-bbox="494 575 1197 933">English Mother Tongue & Higher Mother Tongue Mathematics Science</p> <p data-bbox="563 1032 1128 1093">Topics from P3 - P6</p>	<p data-bbox="1302 575 2074 715">Be consistent in completing daily assignments.</p> <p data-bbox="1319 803 2056 858">Set aside time for revision</p> <p data-bbox="1340 953 2033 1015">Seek help from teachers</p>

2024 PSLE Timeline (Tentative)

August	Oral Examination for English and Mother Tongue
September	Listening Comprehension Examination for English and Mother Tongue
End September - October	Written Examination
End November	Results Release

Post-Primary Pathways



Direct-School Admission (DSA)

- DSA-Sec allows students to be admitted to secondary schools based on a diverse range of talents and achievements that may not be demonstrated by the PSLE.
- Schools will stop using general academic ability tests for DSA selection.
- All secondary schools will offer up to 20% of their non-IP places through DSA.

DSA Areas

- Schools participating in the DSA-Sec offer talent development programmes in the following categories:
 - Creativity, Entrepreneurship And Innovation
 - Languages And Humanities
 - Leadership And Uniformed Groups
 - Performing Arts
 - Science, Technology, Engineering, Mathematics
 - Sports And Games
 - Visual Arts And Media

DSA Application

- All schools have a common DSA-Sec application timeline and application is made via a centralised online portal.
- The application form is simplified and there is no need to attach certificates, transcripts or testimonials. Student's P5 and P6 academic results, school-based achievements and awards will be automatically shared with the schools that the student applies to.
- More details will be shared when available.

Changes in PSLE Scoring

Use of Achievement Levels (ALs) in place of T-Scores in 2021

Rationale:

- To nurture different aspects of our students
- Reduce over-emphasis on academic results by:
 - Reducing fine differentiation at a young age
 - Recognising a student's level of achievement, regardless of how his peers have done

Changes in PSLE Scoring

PSLE Scores using Achievement Levels

- Reflects how well students have done relative to learning objectives of the curriculum
- 29 possible PSLE Scores
 - Students' examination scores are less finely differentiated, and more students will have the same PSLE Score
 - More schools with the same cut-off point
 - Students have a wider range of schools to choose from depending on their strengths and interests, unique school programmes, and CCAs

Achievement Levels

- The design of the scoring bands strikes a careful balance between reducing undue differentiation between students' examination results and ensuring meaningful secondary school posting outcomes.
- The upper AL bands are designed to avoid too many students achieving the same PSLE Score and requiring more tie-breaking to determine secondary school postings.
- At the middle to lower ALs, students' scores are more widely distributed, hence finer differentiation is less meaningful.

AL	Raw Marks Range
1	90 – 100
2	85 – 89
3	80 – 84
4	75 – 79
5	65 – 74
6	45 – 64
7	20 – 44
8	< 20

Foundation Level

Under the new AL system, if your child is taking foundation subjects, your child will be graded A to C.

For the purpose of S1 posting, Foundation Level Grade A to C will be mapped to a Standard Level subject equivalent of AL 6 to AL 8 respectively, to derive a student's overall PSLE Score.

Grades for Foundation	Foundation Raw Mark Range	Equivalent Standard Level AL
A	75 - 100	6
B	30 - 74	7
C	< 30	8

Students who are exempted from MT languages, their MT scores are also pegged at AL6 to AL8

Scoring System

Placement Outcome	PSLE Score
G3	4 - 20
G3 / G2 option	21- 22
G2	23 - 24
G2 / G1 option	25
G1	26 - 30 with AL7 or better in both English Language <u>and</u> Mathematics

SCHOOL'S EXPECTATIONS

Punctuality & attendance

Reporting Time

- 7.35 a.m. to 7.45 a.m. – Silent Reading
- 7.45 a.m. – Flag Ceremony

Students are expected to attend school for the **full** duration of the school term.

Punctuality & attendance

- Students who are absent from classes, CCA and other school activities must submit a **valid medical certificate or a letter of excuse**.
- During **official school hours**, no student may leave the school without permission from school leaders.

Attire

- Students are to don on their **formal school uniform** unless they have PE lessons for the day. If they have PE before recess, they can come to school wearing their PE Uniform. Thereafter, they are to change to their Formal Uniforms.
- Details of other attire expectations such as hairstyle, hair accessories and other accessories, socks, etc can be found in the student's handbook. Please take some time to go through the student's handbook with your child/ward.

WhatsApp Groups

- The school does not encourage students to set up their own WhatsApp chat groups.
- Such groups are created by the students and the school does not provide any form of monitoring.



Parents/Guardians are advised to monitor your child/ward's online activity at home.

Homework Policy

- Homework is any learning activity that students are required to complete outside of curriculum time.
- Assignments and Projects are considered as homework.



Homework Policy

Key objectives of homework:

- Reinforce learning and deepen understanding
- Apply skills and concepts taught
- Develop good study skills and habits
- Encourage ownership and responsibility for independent learning
- Teachers and parents can monitor student progress.

Homework Policy

Promoting a balanced life for our students

No homework will be given on :

- Holidays accorded for religious observances and racial celebration e.g. Hari Raya, Good Friday.
- Tuesdays as it is a long day with CCA.

Home-school Collaboration

**SUPPORT
FROM
PARENTS
IS CRUCIAL**



**HELP US TO HELP
YOUR CHILDREN**



Parent-Child-Teacher Conference (PCTC)

<p>WHEN?</p> <p>May and November</p>	<p>WHO?</p> <p>Form Teacher, Parents and Child</p>
<p>WHY?</p> <p>For students to demonstrate their learning and share their reflections.</p> <p>For Parents to have fuller picture of their child's progress and development to better support them at home</p>	<p>HOW?</p> <p>15min slot per child</p> <p>More details will be provided</p>

Communication

Platforms for Communication with Teachers

- Students' Handbook
 - Parents should check the children's handbook from time to time
 - For urgent matters, parents could email the respective teachers or call the school. Teachers are contactable during office hours, **Mon-Fri: 7.30 am to 5.30 pm.**
 - Teachers will train the students to write their homework in the handbook
- Email
- Whatsapp Biz
- Parents Gateway

- Slides from today will be uploaded onto school website by end of the week.

Communication

Platforms for Communication with School Leaders

Please call the school at 65119555 or email cantonment_ps@moe.edu.sg.

General Information

- Parents should refrain from bringing water bottles/ books for their children when they have forgotten to do so.
- Students are not to bring toys, electronic gadgets and mobile phones to school. The school will confiscate these items, if found. The school will not be held responsible for the loss of any of these items. The use of mobile phones is not allowed on the school premises.
- To ensure the safety of all students and staff, all parents are not allowed to enter the school unless it is for emergency purposes and permission is granted by the school management.

Home-School Partnership

Developing good habits

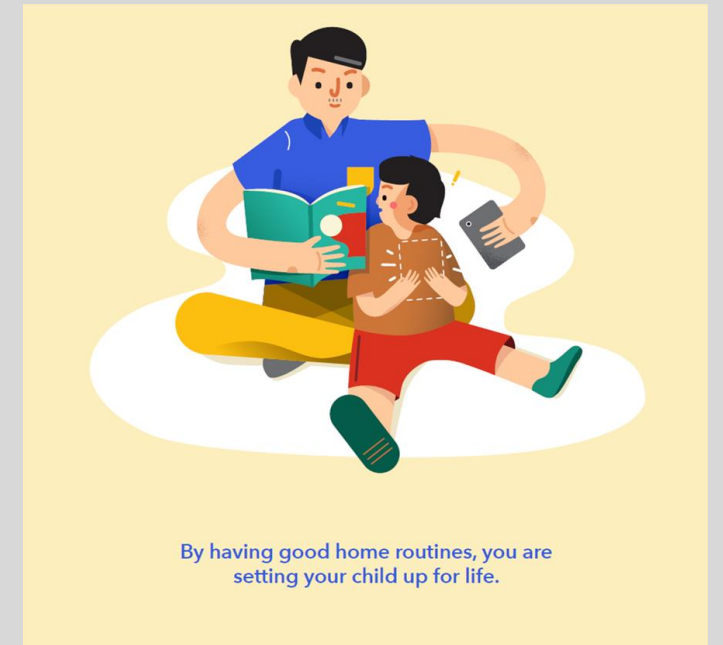
We want to nurture your child to be a self-directed learner with good habits and takes responsibility for his/her own learning.

- **Home routine**

- *Have a specific place for items to be signed by parents*
- *Set an early bedtime*
- *Read with your child*
- *Set them housework etc.*

- **Study area**

- *Set up a conducive home environment e.g. set up a well-lit desk and a study area at home*



By having good home routines, you are setting your child up for life.

Developing good habits

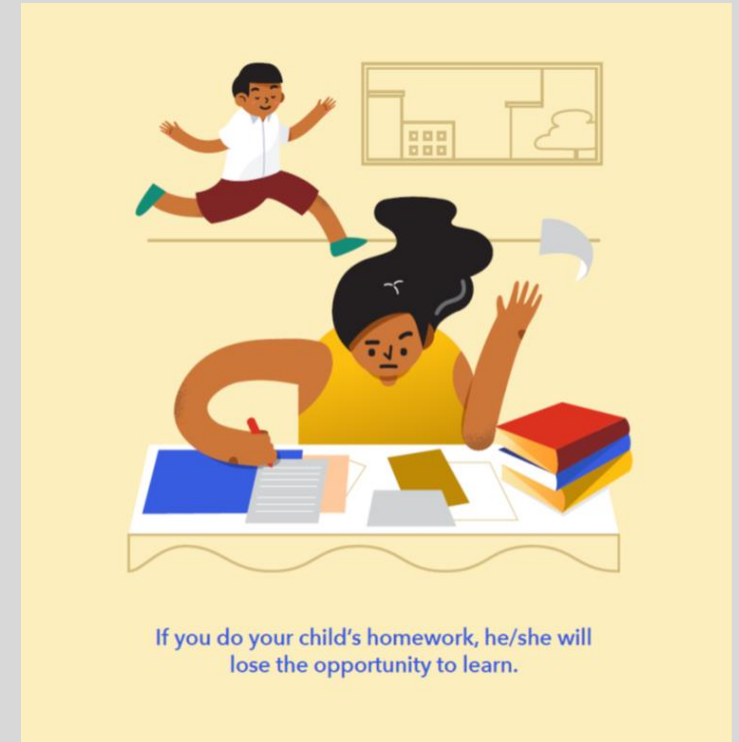
We want to nurture your child to be a self-directed learner with good habits and takes responsibility for his/her own learning.

- **Home learning support**

- *Parents complement school practices in terms of homework and learning support (if the child needs it)*

- **Nurture independent learner**

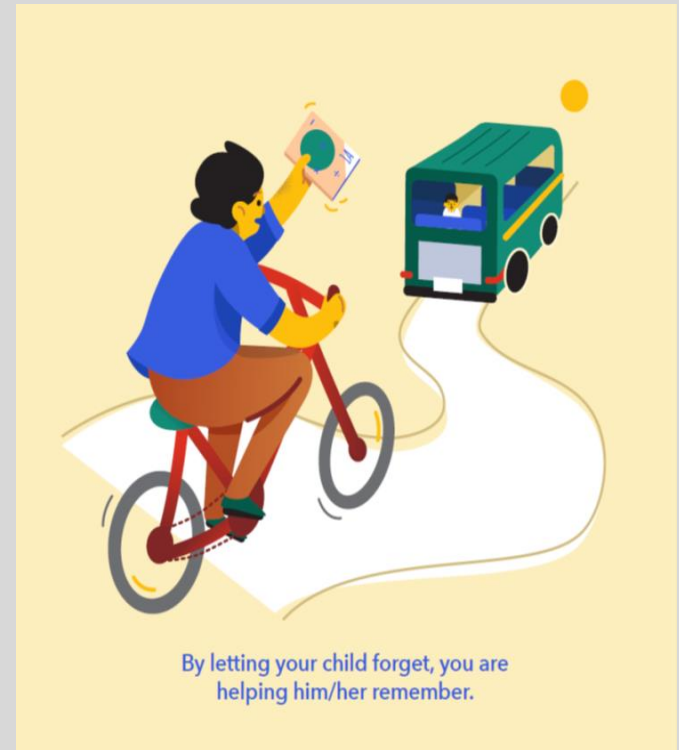
- *By nurturing an independent learner. e.g. Parents should ask child about what he/she has jotted down in his/her Student Handbook instead of asking the teacher*



Developing good habits

We want to nurture your child to be a self-directed learner with good habits and takes responsibility for his/her own learning.

- **Allow failure**
 - *If your child forgets to bring something to school, do not panic, do not worry. Your child will not face harsh punishment i.e. **Do not bring items to school for your child if he/she has forgotten it.***



By letting your child forget, you are helping him/her remember.

Parent Support Group@Cantonment

Telegram Group

- Organises and assists in school-wide events
- Acts as the bridge between parents and school
- Supports and strengthens school enrichment or learning support programmes - working with teachers across all disciplines
- Organises parent bonding and get-together sessions
- Hosts CPS Telegram communications channel; this is where parents/caregivers can ask questions and discuss



CPS meetup



How to join?

Start with just one event volunteering! School and PSG regularly puts up volunteering opportunities on school official meetup page. Please create your meetup account, join the CPS group (QR code) and please wait patiently for your account to be verified (3-5 business days). Once verified, you can sign up to be a volunteer!

<https://www.meetup.com/cantonmentprimaryschool/>

Parent Support Group@Cantonment

Key Activities (monthly):

- Jan: Orientation
- Feb: Chinese New Year Lohei
- March: Eco/Earth-week / Earth Hour
- April: International Friendship Day / Hari Raya
- May: Mother's Day School Activity
- June: Father's Day School Activity
- July: Racial Harmony Day
- August: Terra Village
- September: Teacher's Day
- October: Deepavali / Children's Day
- November: Career Day

Through-the-year /

Ad-hoc Programmes:

- SwimSafer Program
- Mother Tongue Programs
- Innovation Mentorship
- P1 / P2 Learning Journeys (TBC)
- PSG Parent Bonding activities: Bowling event, BBQ, etc.

Montfort Care Parenting Support Team

- Montfort Care is a Social Service Agency dedicated to improving the lives of individuals, families and the community facing transitional challenges
- The Parenting Support Team team of Montfort Care was appointed by the Ministry of Family Development (MSF) to deliver Evidence-Based Programmes within the Kreta Ayer / Bukit Merah region.
- For any enquiries, you can contact them at: parenting@montfortcare.org.sg

CLASS INFORMATION

Class Expectations

- **Birthdays**

While birthdays are important days to remember, holding birthday parties in the school is not allowed. A culture of appreciation can be cultivated through simple and meaningful gestures like singing a birthday song in class. We want our students to build quality relationships with one another and avoid comparing the haves and have-nots.

- **Showing Appreciation**

Appreciation can be shown to teachers through simple ways such as gifting a card. Please do not buy expensive gifts for teachers.

Class Information

- FTs teaching philosophy
- Expectations
- Class routines

Q & A

Please scan to give
feedback. Thank you!

**THANK YOU
AND
HAVE A GOOD
WEEKEND!**

